



## CATALOGUE

*The labware people*

**Labtech**  
Medico (P) Ltd.

(An ISO 2001:2008 CERTIFIED COMPANY)



LABORATORY GLASS WARES | PLASTIC WARES | DISPOSABLES & INSTRUMENTS



## SUPER GRADE, GREEN GLASS

WITH TISSUE PAPER INTERLEAVED

PRE - CLEANED

Dim. 26 x 76 mm Thickness: 1.0-1.2 mm

Nylon tropical pack 50pcs/Box, 80 boxes/ Carton



**GROUND EDGES, CORNERS 90°**

CAT No.	P/N	MARKING AREA	BOX OF
LT-1 A	0303-0004	Plain	50
LT-1 B	0303-2104	Single frosted 1 side 1 end	50
LT-1 C	0303-2204	Double frosted 2 side 1 end	50



**GROUND EDGES, CORNERS 45°**

CAT No.	P/N	MARKING AREA	BOX OF
LT-1 D	0302-0004	Plain	50
LT-1 E	0302-2104	Single frosted 1 side 1 end	50
LT-1 F	0302-2204	Double frosted 2 side 1 end	50



**CUT EDGES, CORNERS 45°**

CAT No.	P/N	MARKING AREA	BOX OF
LT-1 J	0306-0004	Plain	50
LT-1 K	0306-2104	Single frosted 1 side 1 end	50
LT-1 L	0306-2204	Double frosted 2 side 1 end	50



**CUT EDGES, CORNERS 90°**

CAT. No.	P/N	MARKING AREA	BOX OF
LT-1 G	0307-0004	Plain	50
LT-1 H	0307-2104	Single frosted 1 side 1 end	50
LT-1 I	0307-2204	Double frosted 2 side 1 end	50



**BLOOD COLLECTION  
TUBES**



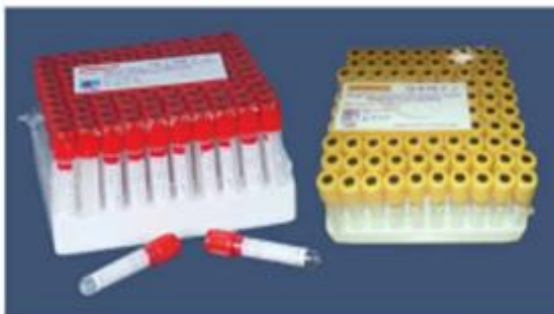
**BLOOD COLLECTION TUBES WITH SINGLE CAP (NON VACUUM )**

CAT. No	Description	Packing
<b>LT-90</b>	13 x 75 mm PS tubes with Plastic Cap Plain, K2 EDTA, K3EDTA, Heparin Sodium, Heparin Lithium, 3.8% Sodium Citrate, 3.2% Sodium Citrate, Clot activator, Fluoride Sodium & Oxalate Potassium	100pcs/pack



**BLOOD COLLECTION TUBES WITH DOUBLE CAP (VACUUMED / NON-VACUUMED)**

CAT. No	Description	Packing
<b>LT-91 A</b>	Blood Collection tubes, double cap 13 x 75 mm K3EDTA, K2 EDTA <b>Vacuumed (PET)</b>	100pcs/pack
<b>LT-91 B</b>	<b>Non-vacuumed (PP)</b>	
<b>LT-92 A</b>	Blood Collection tubes double cap 13 x 75 mm clot activator <b>Vacuumed (PET)</b>	100pcs/pack
<b>LT-92 B</b>	<b>Non-vacuumed (PP)</b>	
<b>LT-93 A</b>	Blood Collection Gel tubes double cap 13 x 75 mm <b>Vacuumed (PET)</b>	100pcs/pack
<b>LT-93 B</b>	<b>Non-vacuumed (PP)</b>	
<b>LT-94 A</b>	Blood Collection tubes double cap 13 x 75 mm sodium citrate <b>Vacuumed (PET)</b>	100pcs/pack
<b>LT-94 B</b>	<b>Non-vacuumed (PP)</b>	





CAT. No.	Description	Packing
LT- 95 A LT- 95 B	Blood Collection tubes double cap 13 x 75 mm sodium fluoride vacuumed (PET) non-vacuumed (PP)	100pcs/pack
LT- 96 A LT- 96 B	Blood Collection tubes double cap 13 x 75 mm Heparin sodium vacuumed (PET) non-vacuumed (PP)	100pcs/pack
LT- 97 A LT- 97 B	Blood Collection tubes double cap 13 x 75 mm ESR vacuumed (PET) non-vacuumed (PP)	100pcs/pack
LT- 98	Blood Collection tubes, (pediatric) heparin sodium, clot activator, k3edta	100pcs/pack



**LIQUID HANDLING**

**MICRO PIPETTES** (Imported)  
**STANDARD CLASS**  
**(SEMI / FULLY AUTOCLAVABLE)**

CAT. No.	Description	Packing
	<b>FIXED VOLUME</b> Pipettes with Built-in Tip Ejector	1pc/pack
LT- 113 A	5ul	
LT- 113 B	10ul	
LT- 113 C	20ul	
LT- 113 D	25ul	
LT- 113 E	50ul	
LT- 113 F	100ul	
LT- 113 G	200ul	
LT- 113 H	250ul	
LT- 113 I	500ul	
LT- 113 J	1000ul	
LT- 113 K	5000ul	
	<b>Variable VOLUME</b>	1pc/pack
LT- 114 A	2-10ul	
LT- 114 B	5-50ul	
LT- 114 C	10-100ul	
LT- 114 D	20-100ul	
LT- 114 E	20-200ul	
LT- 114 F	100-1000ul	
LT- 114 G	200-1000ul	





## 'RAININ' MICRO PIPETTES

(SUPERIOR CLASS)

### THE ERGONOMIC CHAMPION

Lighter springs, improved fit and feel, and advanced calibration tracking.

### TOTAL COMFORT

Our engineers have created the most balanced and comfortable pipette on the market

### LOWEST PLUNGER FORCE

Pipet-Lite XLS has the lightest operating forces among all manufacturers

### THUMB PROTECTION

A built-in silicone shock absorber minimizes impact from tip ejection. LTS models reduce tip ejection force to a maximum of 0.6 kg.

### ADVANCED CALIBRATION TRACKING

Every rainin XLS pipette is equipped with RFID - Radio frequency identification - for accessing service and calibration data right from the pipette.

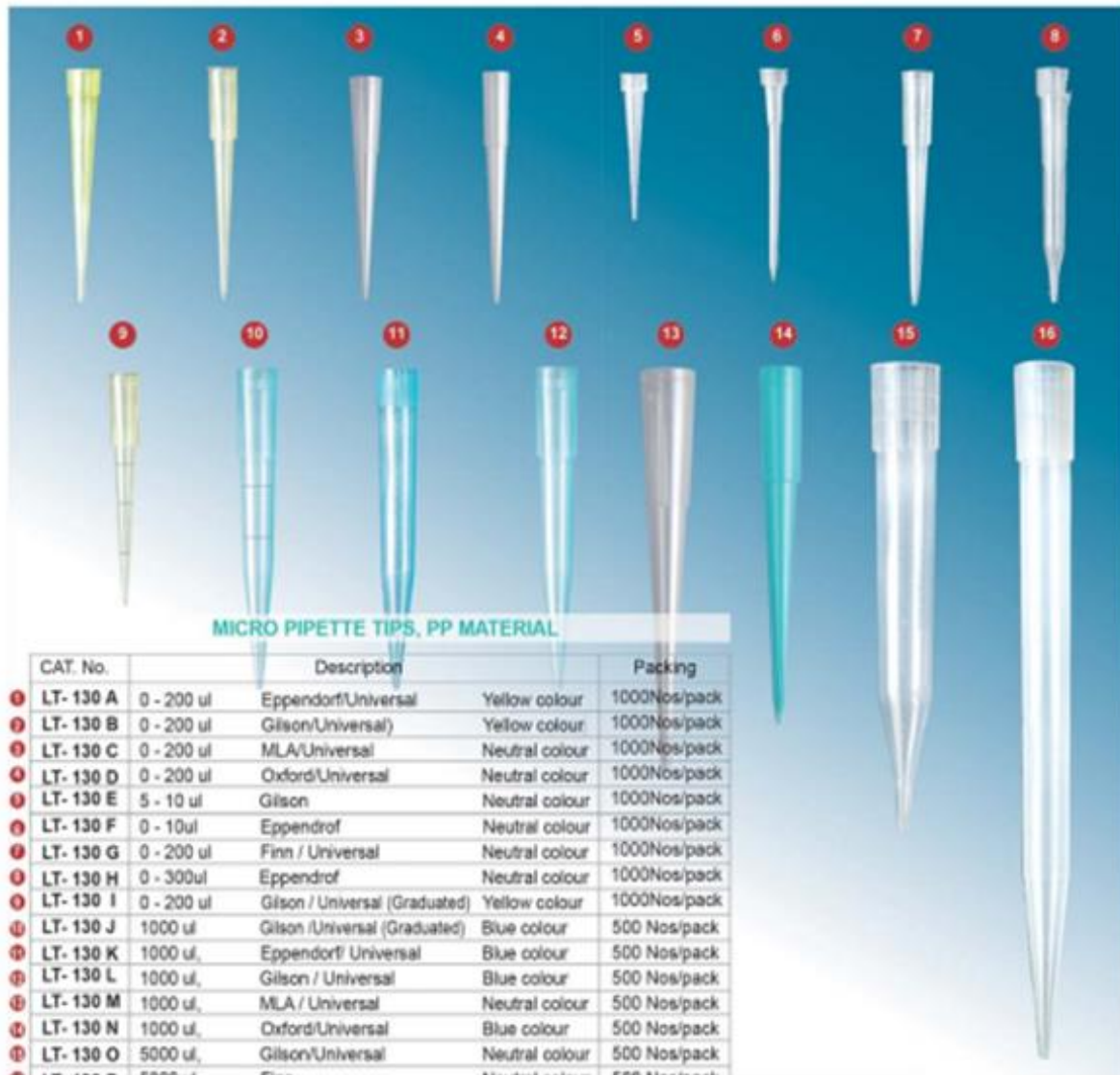


PIPET-LITE XLS UNIVERSAL FIT (SL)		
Cat. No.	P/N	Volume Range
LT- 115 A	17011796	0.1-2 µl
LT- 115 B	17011792	0.5-10 µl
LT- 115 C	17011797	2-20 µl
LT- 115 D	17011793	10-100 µl
LT- 115 E	17011798	20-200 µl
LT- 115 F	17011800	20-300 µl
LT- 115 G	17011794	100-1000 µl
LT- 115 H	17011799	200-2000 µl
LT- 115 I	17011801	500-5000 µl
LT- 115 J	17011795	1-10 ml
LT- 115 K	17011802	Starter Kit, Universal-Fit

Starter Kit : SL-20XLS, SL-200XLS, SL1000XLS and accessories.  
Pipet-Lite SL XLS Pipettes use universal tips.

### BEST VALUE!

**TOTAL COMFORT** (Starter Kit)  
3 Pipet-Lite XLS : 20, 200 and µl  
3 Hang-Ups  
3 Racks of Tips



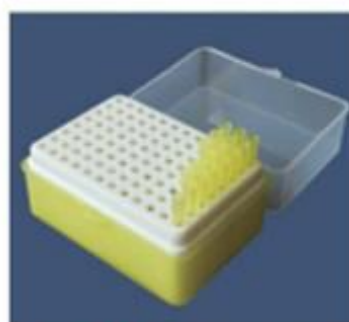
**MICRO PIPETTE TIPS, PP MATERIAL**

CAT. No.	Description	Packing
① LT-130 A	0 - 200 ul Eppendorf/Universal Yellow colour	1000Nos/pack
② LT-130 B	0 - 200 ul Gilson/Universal) Yellow colour	1000Nos/pack
③ LT-130 C	0 - 200 ul MLA/Universal Neutral colour	1000Nos/pack
④ LT-130 D	0 - 200 ul Oxford/Universal Neutral colour	1000Nos/pack
⑤ LT-130 E	5 - 10 ul Gilson Neutral colour	1000Nos/pack
⑥ LT-130 F	0 - 10ul Eppendorf Neutral colour	1000Nos/pack
⑦ LT-130 G	0 - 200 ul Finn / Universal Neutral colour	1000Nos/pack
⑧ LT-130 H	0 - 300ul Eppendorf Neutral colour	1000Nos/pack
⑨ LT-130 I	0 - 200 ul Gilson / Universal (Graduated) Yellow colour	1000Nos/pack
⑩ LT-130 J	1000 ul Gilson /Universal (Graduated) Blue colour	500 Nos/pack
⑪ LT-130 K	1000 ul, Eppendorf/ Universal Blue colour	500 Nos/pack
⑫ LT-130 L	1000 ul, Gilson / Universal Blue colour	500 Nos/pack
⑬ LT-130 M	1000 ul, MLA / Universal Neutral colour	500 Nos/pack
⑭ LT-130 N	1000 ul, Oxford/Universal Blue colour	500 Nos/pack
⑮ LT-130 O	5000 ul, Gilson/Universal Neutral colour	500 Nos/pack
⑯ LT-130 P	5000 ul, Finn Neutral colour	500 Nos/pack



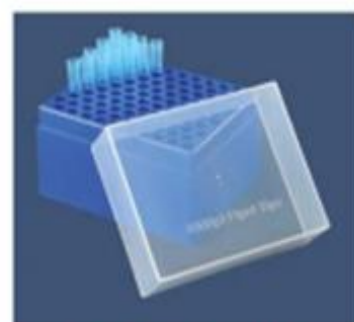
**MICRO TIP RACK PP MATERIAL**

CAT. No.	Description	Packing
LT-131 A	Tip Rack for 5 - 10 ul Tips	100 / Carton



**MICRO TIP RACK PP MATERIAL**

CAT. No.	Description	Packing
LT-131 B	Tip Rack for 0 - 200 ul Tips (Yellow tips)	100 / Carton

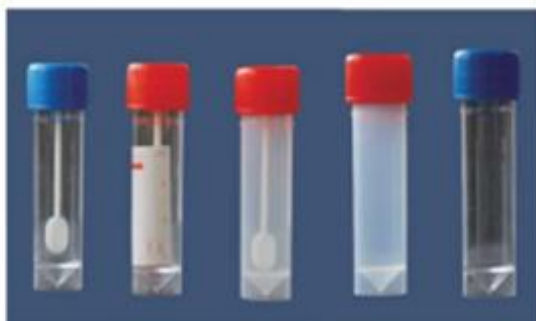
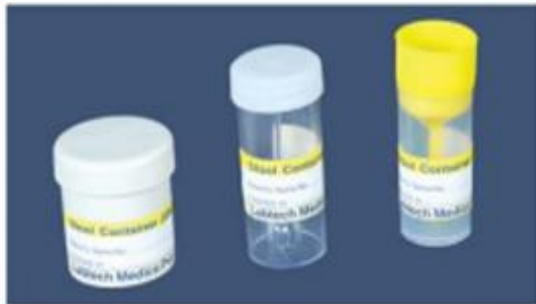
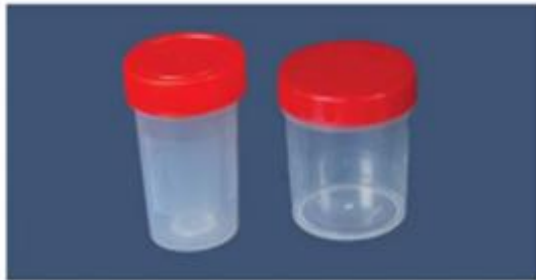


**MICRO TIP RACK PP MATERIAL**

CAT. No.	Description	Packing
LT-131 C	Tip Rack for 200 - 1000 ul Tips (Blue tips)	100 / Carton



**CONTAINERS & SAMPLE CUPS**



### SAMPLE CUPS

CAT. No.	Description	Packing
LT- 194 A	Urine Sample Cup with Screw Cap, 60ml (Sterile)	50/pack
LT- 194 B	Urine Sample Cup with Screw Cap, 50ml (Sterile)	50/pack
LT- 194 C	Urine Sample Cup with Screw Cap, 40ml (Sterile)	50/pack
LT- 194 D	Urine Sample Cup with Screw Cap, 35ml (Sterile)	50/pack
LT- 194 E	Urine Sample Cup with Screw Cap, 30ml (Sterile)	50/pack
LT- 194 F	Urine Sample Cup with Screw Cap, 100ml (Sterile)	50/pack
LT- 194 G	Urine Sample Cup with Screw Cap, 100ml (Sterile) Tall	50/pack
LT- 195 A	Stool/Sputum Sample Cup with Spoon and Screw cap	50/pack
LT- 195 B	Stool Sample Cup with Attached Spoon and Screw Cap	50/pack
LT- 195 C	Stool Sample Cup with Attached Spoon and Press Cap	50/pack

(Non-Sterile Containers are available on request)

### STOOL CONTAINER WITH SPOON

(Imported)

CAT. No.	Description	Packing
LT- 196 A	40 ml, molded graduation of each 10 ml upto 30 ml, PP	50pc/pack
LT- 196 B	60 ml, molded graduation of each 10 ml upto 50 ml, PP	50pc/pack
LT- 196 C	100 ml, molded graduation of each 10 ml upto 90 ml, PP	50pc/pack
LT- 196 D	150 ml, molded graduation of each 10 ml upto 100 ml, PP Sterile / Non-Sterile	50pc/pack
LT- 196 E	30 ml, molded graduation of each 10 ml upto 20 ml , PP (Sterile / Non-Sterile)	100pc/pack